

Station 040:
Automatic tightening of the RING NUT.

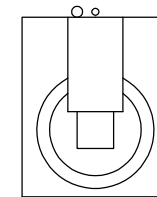
Station 030:
Open cartridge air leakage test
of the FAUCET with low pressure,
and then with high pressure

Station 020:
Automatic handling of the mixer cartridge
and following execution on the FAUCET of:

- Closed cartridge air leakage test, by the hot inlet
- Closed cartridge air leakage test, by the cold inlet
- Flow air test

Station 050:
Automatic transferring of the O-RINGS
from the fixture onto the body.

Station 060:
Automatic GREASE dispensing onto the gaskets.

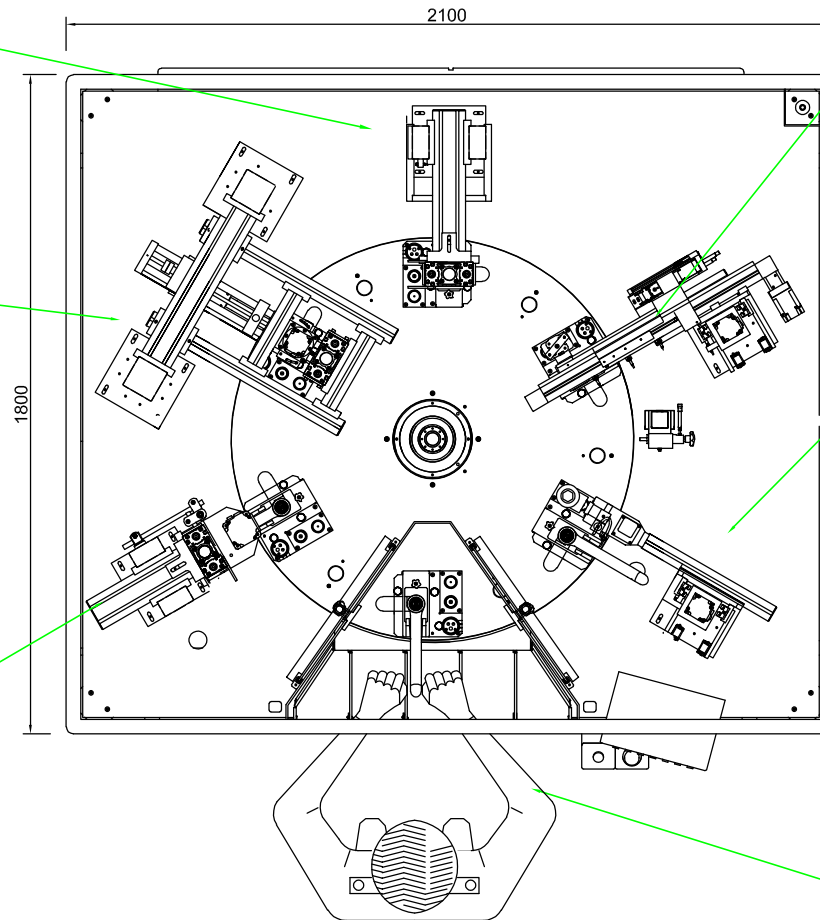


Station 010:
Manual execution of the following operations:
(Right fixture)

- Loading the BODY
- Inserting the 1st TEFLON RING
- Loading the O-RINGS onto the pallet

(Left fixture)

- Unloading the assembled and tested FAUCET
- Trasferring the pre-assembled BODY
- Inserting the SPOUT
- Inserting the 2nd TEFLON RING
- Inserting and pre-tightening the TUBE
- Inserting the MIXER CARTRIDGE inside the tube
- Loading and pre-tightening of the RING NUT



ASSEMBLY AND TESTING OF KITCHEN FAUCETS